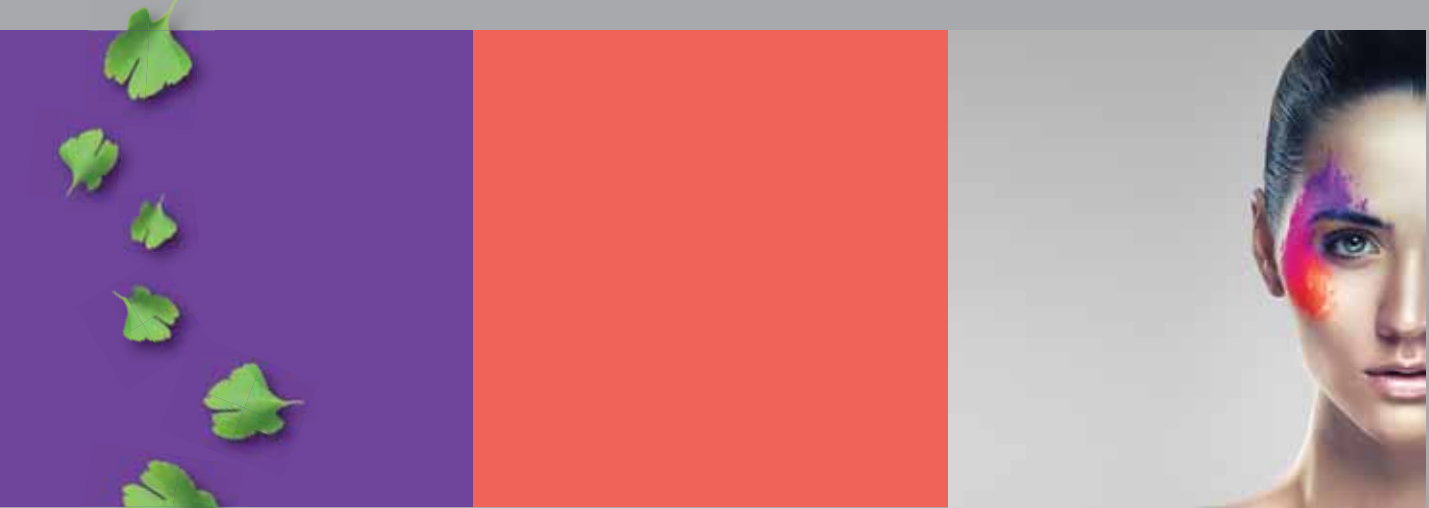




Drylac[®]
POWDER COATINGS

Essentials

Exterior and interior industrial applications | Volume 2



Essentials for exterior and interior industrial applications

This color chart features a wide selection of stock powder coatings intended for industrial applications such as residential window and door frames, lawn mowers, garden equipment, patio furniture, fences, electrical boxes, lighting fixtures, automotive accessories, bicycles, motorcycles, agricultural machinery, sporting goods as well as other industrial applications.

It includes a wide selection of black and white colors. Colors not displayed in this color chart might appear in another **TIGER Drylac®** color chart or can be made to order.

All colors exhibited in this color chart are suitable for exterior and interior applications, with the exception of **Black Flat Matte, TIGER Drylac® 69/80331** and **Midnight Black Epoxy Wrinkle, TIGER Drylac® 69/80143**; these two colors are intended for interior applications only.



TIGER Drylac® non metallic stock and custom-colors in **Series 39, Series 49** and **Series 59**; made in the USA and Canada, are periodically re-certified and carry the (Underwriter Laboratories) Recognized Component Mark (Spec DTOV2. MH16276 and Spec DTOV2.MH27573). This UL Mark is for all equipment and products intended for the American and Canadian markets.

ASA colors

Polyester-based ASA colors; also referred to as ANSI colors, are available in various shades of industrial grey in **TIGER Drylac® Series 39** and **Series 49** for industrial machinery applications.

Bengal colors

Polyester-based **TIGER Drylac® Series 49 Bengal** color selection exhibits exceptional flow properties and is available in high gloss levels.

Anti-graffiti properties

Polyurethane-based **Anti-Graffiti White, TIGER Drylac® 44/10008**, and **Anti-Graffiti Clear Glossy, TIGER Drylac® 44/00018** provide excellent chemical resistance and surface hardness properties. **Anti-Graffiti Clear Glossy, TIGER Drylac® 44/00018** can be applied as top coat over any **TIGER Drylac®** powder coating to obtain a tough, easy to clean surface.

Anti-skid properties

Polyester-based **Anti Skid Black, TIGER Drylac® 49/80521**, is an ideal finish for metal stair cases and decking, safety gratings, floor plates and grids, maintenance cat walks, elevator floors, conveyors and additional industrial applications that require an anti-slip coating for safety purposes. It is recommended to apply a primer or a semigloss base coat.

High reflectivity properties

Polyester-based **High-Reflective White, TIGER Drylac® 49/10410** strikes a perfect balance between smoothness and hiding power. Formulated for lighting applications, it offers a reflectivity value of 92+ with a gloss level of over 90 units.

Outgassing forgiving (OGF) properties

OGF powder coatings are developed for castings, hot galvanized and forged steel, aluminum flame sprayed and other porous and outgassing prone substrates such as fired clay and ceramics. They are available in a variety of colors including **White, TIGER Drylac® 49/10870**, and **Chrome, TIGER Drylac® 49/91312**. OGF additives can be added to any **TIGER Drylac®** powder coating. However, for large volumes, it is recommended to produce the powder coating in an OGF formulation on a custom-basis.

Antique/vein metallic finishes

Polyester-based antique/vein metallic finishes in **TIGER Drylac® Series 59** are formulated with mica pigments and do not require a clear top coat for either exterior or interior applications.

Fine and rough textured

Fine, smooth and rough textured colors with gloss levels ranging from matte to high gloss are ideal for automobile underbody and marine environments where high chip resistance and wet-paint looks may be required. To ensure adequate corrosion protection in the valleys of the textures, it is essential to observe the minimum film thickness recommendations (see applicable Product Data Sheets).

Wrinkle finishes

Wrinkle finishes provide an attractive solution for electronic cabinets, metal cabinets, lighting fixtures, automotive accessories and other applications where the concealment of metal imperfections is required. **Midnight Black Epoxy Wrinkle, TIGER Drylac® 69/80143** is suitable only for interior applications.

Industrial warehouse racking systems

A number of colors are formulated in polyester-based **TIGER Drylac® Series 49** as an economical solution to match typical industry colors for industrial warehouse racking systems. **Steel Rack Yellow, TIGER Drylac® 49/20047, Steel Rack Orange, TIGER Drylac® 49/25001** and **Steel Rack Red, TIGER Drylac® 49/30052**, exhibit limited UV stability.

SealKor

Polyester-based **SealKor Grey, TIGER Drylac® 39/71103** is a weather resistant powder coating, compliant with AAMA 2603 specifications. It is recommended as an alternative to epoxy-based zinc-rich and zinc-free primers or as a one-coat solution to conventional two-coat systems (primer + top coat). **SealKor Black, TIGER Drylac® 223/80001** is formulated exclusively for automotive applications. **SealKor** can be made to order in any custom color.

Polyester urethanes

Polyurethane-based **TIGER Drylac® Series 44** is available in a variety of colors, gloss levels and finishes such as matte, semigloss, glossy, textured and metallics. Colors not available in stock can be made to order.

Clear coats

Polyester, polyester super durable, polyurethane and acrylic-based clear finishes are available in a variety of gloss levels from matte to high gloss.

Powder coating colors exhibited in this color chart include:

Interior applications	Epoxy/Polyester (Hybrid)	Series 09
	Epoxy	Series 69
	Polyester/Acrylic (Hybrid)	Series 16
Interior and exterior (non architectural) applications	Polyester Urethane	Series 44
	Polyester TGIC	Series 39
	Polyester TGIC-free	Series 49
	Polyester TGIC-free Super Durable	Series 59
	Polyester TGIC-free Super Durable	Series 68
Exterior (architectural) applications	Polyester TGIC Super Durable	Series 38
Exterior (automotive) applications	Polyester TGIC	Series 223

Color swatches featured in this color chart have been matched to color standards at a 60-degree visual angle under a D65 Daylight primary source. Gloss level on metallic, fine and rough textured swatches cannot be accurately measured. The swatches are to be considered as an indication only. In practice, discrepancy between the color swatch and the actual powder coating may arise. This is due to paper and ink limitations, the influence of light and heat during the color chart production, as well as gloss level, substrate, surface variations, binder systems and pigments, coating thickness and cure oven conditions used during application. For an accurate color and finish assessment, it is recommended to obtain a powder coated sample panel from **TIGER Drylac®**.



glossy | 39/30070
Snowmobile Purple | gloss level 90±5



glossy | 39/40010
Royal Blue | gloss level 85±5



glossy | 59/40653
Mercury Blue | gloss level 80±5



bengal | 49/44444
Bengal Blue | gloss level 95±5



glossy | 39/50060
U.S. Green | gloss level 90±5



glossy | 59/50412
Fence Green | gloss level 85±5



glossy | 68/51548
Deer Green | gloss level 85±5



bengal | 49/55555
Bengal Green | gloss level 95±5



glossy | 49/10316
Steel Rack White | gloss level 90±5



glossy | 39/15020
Almond | gloss level 90±5



glossy | 39/15010
Beige | gloss level 90±5



bengal | 49/11111
Bengal White | gloss level 95±5



glossy | 49/20047 ▲
Steel Rack Yellow | gloss level 90±5



glossy | 68/20057
Deer Yellow | gloss level 85±5



glossy | 39/20130
Buttercup Yellow | gloss level 85±5



bengal | 49/10388
Bengal Cream | gloss level 95±5



glossy | 49/25001 ▲
Steel Rack Orange | gloss level 90±5



glossy | 59/20360
New Cat Yellow | gloss level 80±5



glossy | 39/20020
Safety Yellow | gloss level 90±5



bengal | 49/66666
Bengal Yellow | gloss level 95±5



glossy | 49/30052 ▲
Steel Rack Red | gloss level 90±5



glossy | 39/32920
Pumpkin Orange | gloss level 90±5



glossy | 39/20010
Safety Orange | gloss level 90±5



bengal | 49/22222
Bengal Orange | gloss level 95±5



glossy | 68/30019
Harvest Red | gloss level 85±5



glossy | 39/30010
Ruby Red | gloss level 90±5



glossy | 39/30100
Fire Engine Red | gloss level 85±5



bengal | 49/33333
Bengal Red | gloss level 90±5



bengal | 49/88888
Bengal Black | gloss level 95±5



glossy | 49/10410
High-Reflective White | gloss level 90+



matte | 49/10103
White Matte RAL 9010 | gloss level 20±5



matte | 49/11350
White Matte | gloss level 20±5



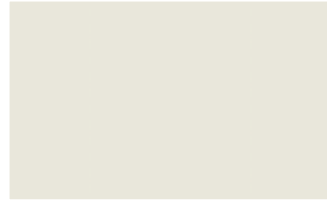
bengal | 49/70158
Bengal Dark Grey | gloss level 95±5



metallic | 39/90000
Silver



matte | 39/10040
White Semi Matte | gloss level 40±5



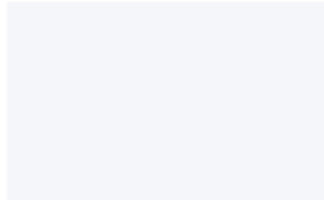
semigloss | 49/13370
Off White | gloss level 60±5



bengal | 49/77777
Bengal Light Grey | gloss level 95±5



glossy | 49/19365
Tan | gloss level 85±5



glossy | 49/11421
WW White | gloss level 85±5



glossy anti-graffiti | 44/10008
Anti-Graffiti White | gloss level 90±5



bengal | 49/99999 ***
Bengal Silver



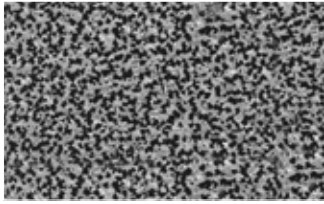
ASA | 39/70010
ASA-70 | gloss level 85±5



glossy | 39/10210
Apollo White | gloss level 90±5



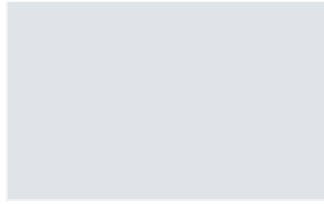
glossy | 49/13721
Blanco | gloss level 90±5



antique/vein metallic | 59/90820
Antique Silver Metallic



ASA | 39/70020
ASA-61 | gloss level 80±5



glossy | 39/10200
Appliance White | gloss level 90±5



glossy | 39/10160
Horizon White | gloss level 90±5



antique/vein metallic | 59/90050
Antique Bronze Metallic



ASA | 49/70082
ASA-61 Semigloss | gloss level 60±5



glossy | 39/10150
Western White | gloss level 90±5



glossy | 39/10010
Sky White | gloss level 90±5



antique/vein metallic | 59/90821
Antique Copper Metallic



ASA | 39/70200
ASA-49 | gloss level 80±5



fine texture | 49/13150
White Fine Texture



rough texture | 49/11570
RTG Nature White

exterior applications



matte interior | 69/80331
Black Flat Matte | gloss level 4±2



matte | 44/80066
Black Magic Flat Matte | gloss level 6±3



fine texture | 39/80200
Black Fine Texture



matte | 39/60060
Roman Bronze Matte | gloss level 20±5



matte | 44/90053
Millennium Black Flat Matte
gloss level 8±5



matte | 44/80060
Solar Black Flat Matte | gloss level 6±3



fine texture | 49/80830
Black Matte Fine Texture



metallic | 39/60020
Bronze Matte



matte | 39/80020
Black Matte | gloss level 20±5



matte | 49/80350
Black Matte RAL 9005 | gloss level 20±7



fine texture | 49/81241
Black Extra Fine Texture



semigloss | 49/62070
Rail Bronze | gloss level 60±5



matte | 44/90052
Millennium Black Matte | gloss level 35±7



matte | 49/81430
Black Semi Matte | gloss level 40±5



smooth texture interior | 69/80143
Midnight Black Epoxy Wrinkle



glossy | 39/60010
Chocolate Brown | gloss level 80±5



semigloss | 44/90051
Millennium Black Semigloss
gloss level 60±5



semigloss | 49/80033
PacCar Black Semigloss | gloss level 55±5



fine texture | 39/80170
Black Wrinkle



fine texture | 49/62721
Brown Fine Texture



semigloss | 39/80040
Black Semigloss | gloss level 60±5



glossy | 39/80010
Gloss Black | gloss level 85±5



fine texture | 49/80521
Anti Skid Black



semigloss | 223/80001
SealKor Black | gloss level 60±5 **NEW**



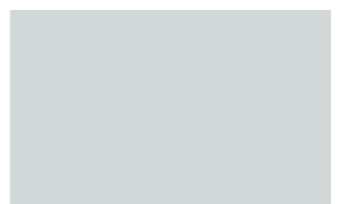
glossy | 49/80070
Truck Black | gloss level 95±5



glossy | 49/80036
Wet Black | gloss level 95±5



rough texture | 49/80990
RTG RAL 9011



semigloss | 39/71103
SealKor Grey | gloss level 40±5 **NEW**



outgassing forgiving | 49/80720
Black OGF | gloss level 70±5



outgassing forgiving | 49/51610
Moss Green OGF | gloss level 80±5



outgassing forgiving | 49/70239
Fed Std Haze Grey OGF | gloss level 40±5



outgassing forgiving | 49/71800
Haze Grey OGF | gloss level 75±5



outgassing forgiving | 49/91312
Chrome OGF * | ***



outgassing forgiving | 49/16130
Light Ivory OGF | gloss level 80±5



outgassing forgiving | 49/10870
White OGF | gloss level 70±5

clear | 16/00030 ❖
Clear Flat Matte

clear super durable | 38/00088 ❖
Clear Matte

clear | 49/00280 ❖
Clear Satin

clear | 49/00530 ❖
Clear Glossy

clear anti-graffiti | 44/00018 ❖
Anti-Graffiti Clear Glossy

clear super durable | 38/00001 ❖
Clear Glossy

clear | 49/01234 ❖
Bengal Clear Glossy



primer | 69/90500 (USA and Mexico)
69/90701 (Canada)
Zinc-Rich Primer | gloss level 70±5



primer | 09/73841
OGF | gloss level 70±5



primer | 69/70000
Dryprotector | gloss level 3±2



essentials

THE AMERICAS

BRAZIL
TIGER Drylac do Brasil Ltda.
13295-000 ITUPEVA - SP
phone 55-11-4496-5327
comercial@tiger-coatings.com

CANADA
TIGER Drylac Canada Inc.
Guelph, ON, N1G 4P5
phone 1-800-243-8148
customerservice.ca@tiger-coatings.com

Warehouse Alberta
Calgary, AB, T2C 4Y7
phone 1-800-243-8148
customerservice.ca@tiger-coatings.com

Warehouse British Columbia
Richmond, BC, V6W 1L8
phone 1-800-243-8148
customerservice.ca@tiger-coatings.com

MEXICO
TIGER Drylac MEXICO S.A. DE C.V.
Naucalpan, Estado de México, CP 53580
phone 52-55-5363-1214
tigermexico@tiger-coatings.com

TIGER Drylac MEXICO S.A. DE C.V.
San Luis Potosí, SLP, C.P. 78395
phone 52-444-799-7243
tigermexico@tiger-coatings.com

U.S.A.
TIGER Drylac U.S.A., Inc.
St. Charles, IL 60174
phone 1-800-243-8148
customerservice.us@tiger-coatings.us

TIGER Drylac U.S.A., Inc.
Ontario, CA 91761
phone 1-800-243-8148
customerservice.us@tiger-coatings.us

Warehouse Texas
Dallas, TX 75233
phone 1-800-243-8148
customerservice.us@tiger-coatings.us

Warehouse Georgia
Jonesboro, GA 30236
phone 1-800-243-8148
customerservice.us@tiger-coatings.us

Warehouse Pennsylvania
Reading, PA 19605
phone 1-800-243-8148
customerservice.us@tiger-coatings.us

EUROPE

AUSTRIA
TIGER Coatings GmbH & Co. KG
4600 Wels
phone 43-7242-400-0
office@tiger-coatings.com

BELARUS
ODO «Tehnocolor» Minsk
220089 Minsk
phone/fax 375-17-204-12-77
tehnicolor@tut.by

BENELUX
TIGER Coatings Belgium bvba
3640 Kinrooi
phone 32-89-70-00-16
office.be@tiger-coatings.com
office.nl@tiger-coatings.com

BOSNIA & HERZEGOVINA
KLIO d.o.o.
75300 Lukavac/Tuzla
phone 387-35-541-300
klio@klio.ba

BULGARIA & ROMANIA
Deyacolor LTD
1113 Sofia 13 post box no. 265
phone/fax 359-2-978-58-61
phone 359-2-411-49-83
office@deyacolor.com

CROATIA
KLIO d.o.o.
10360 Popovec/Sesvete
phone 385-1-200-9041
klio@klio.hr

CZECH REPUBLIC
TIGERLAK, s.r.o.
620 00 Brno
phone 420-545-429-110
office.cz@tiger-coatings.com

FRANCE
TIGER S.A.R.L.
69480 Anse
phone 33-474-67-13-70
office.fr@tiger-coatings.com

GERMANY
DKF KLOZ GmbH
70736 Fellbach
phone 49-711-95-19-80-0
info@dkf-kloz.com

DKF KLOZ GmbH
58739 Wickede-Ruhr
phone 49-2377-36-25
wolfgang.gump@tiger-coatings.com
w.gump@dkf-kloz.com

Jochen Hänel Handelsvertretung
65239 Hochheim a. Main
phone 49-6146-83-58-81
jochen.haenel@tiger-coatings.com

Boris Herrmann Handelsvertretung
57192 Bergkamen
phone 49-2307-26-115-71
boris.herrmann@tiger-coatings.com

Thomas Leitzke Handelsvertretung
41470 Neuss
phone 49-2137-10-97-367
thomas.leitzke@tiger-coatings.com

GREAT BRITAIN
TIGER Coatings UK LTD
Solihull, West Midlands, B93 9EG
phone 44-1564-778-866
office.gb@tiger-coatings.com

HUNGARY
TIGERLAKK Kft.
1183 Budapest
phone 36-61-293-90-20
office.hu@tiger-coatings.com

ITALY
TIGER Drylac Italia s.r.l.
24121 Bergamo
phone 39-35-413-35-80
office.it@tiger-coatings.com

LITHUANIA, LATVIA
UAB „LAKMALIT“
44299 Kaunas
phone 370-7-32-37-41-32-34-95
tiger@lakmalit.lt

POLAND
TIGER Coatings Poland SP. z o. o.
05-500 Piaseczno
phone 48-534-555-729
office.pl@tiger-coatings.com

RUSSIA
TIGER Coatings Moscow LLC
105122 Moscow
phone 007-495-221-09-64
office.ru@tiger-coatings.com

OOO Technokolor-M
105122 Moscow
phone 007-495-787-43-73
sale@tehnokolor.ru

SERBIA & MONTENEGRO
KLIO NS d.o.o.
21000 Novi Sad
phone 381-21-478-01-08
klio_ns@yahoo.com

SLOVAKIA
TIGERLAK Slovakia spol.s r.o.
902 01 Pezinok
phone 421-33-640-00-71
office.sk@tiger-coatings.com

SLOVENIA
T-Lotus d.o.o.
9240 Ljutomer
phone 386-2-583-18-79
kontakt@t-lotus.si

SPAIN
TIGER Coatings Spain S.L.
12003 Castellon de la Plana
phone 34-964-222-148
office.es@tiger-coatings.com

SWEDEN
TIGER Coatings Sweden AB
10231 Stockholm
phone 46-72-565-80-98
office.se@tiger-coatings.com

SWITZERLAND
FEYCO AG
9430 St. Margrethen SG
phone 41-71-747-84-11
info@feyco-coatings.ch

TURKEY
TIGER Coatings Turkey Boya Tic. Ltd. Şti.
c/o Çözüm Antrepo & Depo İşletmeciliği
Tic. Ltd. Şti.
Ovaakca / BURSA / TÜRKİYE
office.tr@tiger-coatings.com

UKRAINE
Interfarb - Ukraina GmbH
79012 Lviv
phone/fax 380-32-240-23-11
phone 380-32-297-10-76
interfarb@utel.net.ua

AFRICA

EGYPT
TIGER Coatings Egypt (LTD)
Cairo, 11828, Egypt
phone 20-2-46-65-14-55
office.eg@tiger-coatings.com

SOUTH AFRICA
FERRO Industrial Products (PTY) LTD
Brakpan, South Africa
phone 27-11-746-4000
williams@ferrosa.co.za

ASIA

CHINA
TIGER Drylac (Taicang) Co.,Ltd.
Taicang, Jiangsu 215400
phone 86-512-53-73-79-99
office.cn@tiger-coatings.com

TIGER Coatings (Chengdu) Co.,Ltd.
Xinjin, Chengdu, Sichuan
phone 86-28-68-61-27-26
office.cn@tiger-coatings.com

TIGER Coatings (Fogang) Co.,Ltd.
Fogang, Qingyuan, Guangdong
phone 86-76-34-88-57-77
office.cn@tiger-coatings.com

INDIA
Berger Paints India Ltd
Kolkata 700017
phone: 91-33-22-29-97-24
consumerfeedback@bergerindia.com

JAPAN
TIGER Drylac JAPAN K.K.
Sagamihara, 252-1135
phone 81-42-760-60-56
office.jp@tiger-coatings.com

TIGER Drylac JAPAN K.K. Osaka office
Nishinakajima Osaka, 532-0011
phone 81-6-63-01-12-25

MALAYSIA
TIGER Drylac MALAYSIA Sdn. Bhd.
50250, Kuala Lumpur
phone 60-3-20-39-43-15
office.my@tiger-coatings.com

TAIWAN
Vigorousport Int. Co., Ltd.
Taichung
phone 886-4-23-82-21-23
office.tw@tiger-coatings.com

THAILAND
Grand Siam Commercial Co., Ltd.
Bangkok 10320
phone 66-2-691-62-74
apichart@samart.co.th

VIETNAM
TIGER Drylac Vietnam Co., Ltd.
Binh Duong Province
phone 84-650-375-83-70
office.vn@tiger-coatings.com

www.tiger-coatings.us
www.tiger-coatings.com



Member of

Powder
Coating
Institute



A BETTER FINISH. FOR A BETTER WORLD.